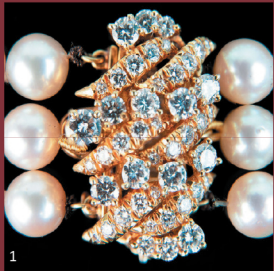


FALL FINE & DECORATIVE ARTS AUCTION

Saturday, November 9 at 10am
1500 Paxton St, Harrisburg, PA 17104



- | | |
|----------------------------------|--------------------------|
| 1. Pearl & 2.18ctw Diam Bracelet | 4. E.D. Roth (1879-1964) |
| 2. Folk Art Inlaid Table | 5. A. Warhol (1928-1987) |
| 3. V. Garcia Acoma Pot | 6. 11" Jade Cabbage |

Silver, Jewelry, Collectibles, Ceramics & Glass
Fine, Decorative, Ethnic & Asian Arts
Furniture & Rugs

PREVIEW: Fri, November 8 from 12-4pm; Sat 8am through auction

ONLINE CATALOG AVAILABLE OCTOBER 25

Bid live, online, absentee or phone

www.CordierAuction.com

License #AU005321
717-731-8662

**CORDIER
AUCTIONS**
& appraisals

ANTIQUES
FIREARMS
ESTATES
REAL ESTATE

Current and coming



Shield IV by Lenore Tawney (1907–2007), 1966. Lenore G. Tawney Foundation, New York; photograph by Rich Maciejewski.

Lenore Tawney was a textile artist celebrated for her sculptural weavings. In the exhibition series *Mirror of the Universe* at the John Michael Kohler Arts Center in Sheboygan, Wisconsin, her floor-to-ceiling fiber installations are on display alongside more intimately sized artworks, collages, drawings, and her journals. Fiber art enthusiasts will find Tawney's use of unconventional techniques and unique material combinations a refreshingly innovative approach to weaving. In *Shield IV*, for instance, Tawney blends linen, beads, and shells into a striking tangerine-colored composition that is at once visually arresting, texturally sophisticated, and poetically arranged.

Beyond the loom

“Nothing can prepare you for seeing the works in person: powerful and dense, yet delicate, unfurling in breathtaking complexity,” writes Glenn Adamson, design scholar and editor-at-large for *The Magazine ANTIQUES*, who provided a detailed biography of the artist for the series's publication. Of *Dark River*, one of Tawney's largest early works, Adamson writes: “examining it up close, you realize how much mathematics and planning there is in Tawney's work; her compositions are very rhythmic, expanding and contracting in a musical sequence.”

Tawney's simultaneously poetic and analytical mind is also on full display in *Cloud Labyrinth*, a sixteen-foot-high, rectangular installation made of thousands of individual threads. The threads blend together into a wispy form that delicately dances in response to air currents. Seeing it is a truly singular experience.

— Jenamarie Boots

***Mirror of the Universe* • John Michael Kohler Arts Center, Sheboygan, Wisconsin • to March 7, 2020 • jmkac.org**